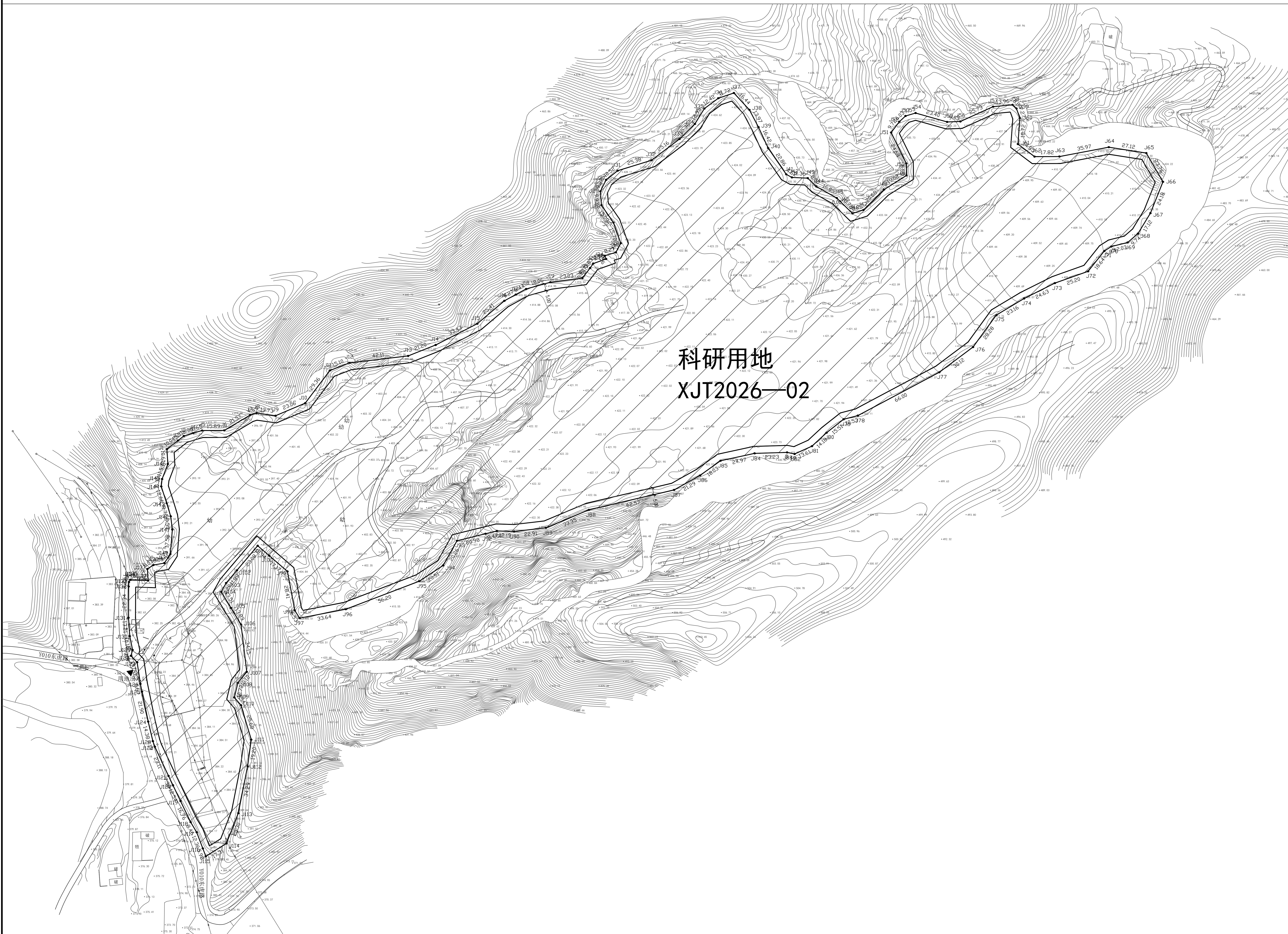
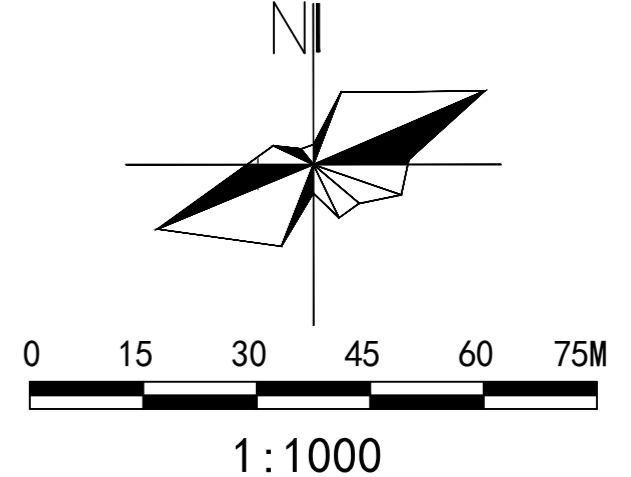


修武县XJT2026—02地块控制性详细规划——规划图则



科研用地
XJT2026—02



用地位置		修武县修武镇科研用地控制性详细规划	
用地名称	修武县修武镇科研用地控制性详细规划		
用地编号	科研用地(B02)		
用地面积(㎡)	12544.40(㎡)(188.16#)		
土地开发	容积率	≤1.0	
	建筑密度(%)	≤25	
	绿地率(%)	≥35	
利用强度	建筑高度(m)	≤36	
	建筑层数	≤10	
	建筑间距(m)	≥1.5H	
建筑控制	建筑后退红线距离	≥3.0m	
	建筑后退道路红线距离	≥3.0m	
	建筑后退用地边界距离	≥3.0m	
交通设施	出入口设置	W	
	出入口宽度	≥3.0m	
	出入口高度	≥2.2m	
其他	其他	按照《城市用地分类与规划建设用地标准》(GB 50132-2019)执行。	
	其他	按照《城市用地分类与规划建设用地标准》(GB 50132-2019)执行。	
	其他	按照《城市用地分类与规划建设用地标准》(GB 50132-2019)执行。	
补充内容	其他		
备注	其他		

规划设计要求:
1. 地块内工业试验厂房应按照国家消防法规和相关规定进行设计。
2. 地块内的废气、废水、噪声、固废的排放标准应符合国家和地方相关法规、规范的要求。
3. 严格按照电力设施保护条例要求保护电力设施安全。
4. 机动车停放按照《河南省电动汽车充电基础设施设施规划管理的通知》要求配置电动汽车充电设施。
5. 在下一步建设工程设计方案中,结合专业单位意见落实市政设施设计。
6. 未尽事宜严格执行国家和地方相关法律法规及规范。

界址点坐标表		界址点坐标表		界址点坐标表		界址点坐标表		界址点坐标表		界址点坐标表					
点号	坐标	点号	坐标	点号	坐标	点号	坐标	点号	坐标	点号	坐标				
J01	3916981.412	J02	3917103.861	J03	3917226.540	J04	3917350.218	J05	3917474.907	J06	3917599.596	J07	3917724.285		
J08	3917849.985	J09	3917974.674	J10	3918100.363	J11	3918225.052	J12	3918350.741	J13	3918475.430	J14	3918600.119	J15	3918725.508
J16	3918850.597	J17	3918975.676	J18	3919100.755	J19	3919225.834	J20	3919350.913	J21	3919475.992	J22	3919601.071	J23	3919726.150
J24	3919851.730	J25	3919976.809	J26	3920101.888	J27	3920226.967	J28	3920352.046	J29	3920477.125	J30	3920602.204	J31	3920727.283
J32	3920852.422	J33	3920977.501	J34	3921102.580	J35	3921227.659	J36	3921352.738	J37	3921477.817	J38	3921602.896	J39	3921727.975
J40	3921853.054	J41	3921978.133	J42	3922103.212	J43	3922228.291	J44	3922353.370	J45	3922478.449	J46	3922603.528	J47	3922728.607
J48	3922853.686	J49	3922978.765	J50	3923103.844	J51	3923228.923	J52	3923354.002	J53	3923479.081	J54	3923604.160	J55	3923729.239
J56	3923854.328	J57	3923979.407	J58	3924104.486	J59	3924229.565	J60	3924354.644	J61	3924479.723	J62	3924604.802	J63	3924729.881
J64	3924855.040	J65	3924980.119	J66	3925105.198	J67	3925230.277	J68	3925355.356	J69	3925480.435	J70	3925605.514	J71	3925730.593
J72	3925855.712	J73	3925980.791	J74	3926105.870	J75	3926230.949	J76	3926356.028	J77	3926481.107	J78	3926606.186	J79	3926731.265
J80	3926856.344	J81	3926981.423	J82	3927106.502	J83	3927231.581	J84	3927356.660	J85	3927481.739	J86	3927606.818	J87	3927731.897
J88	3927857.059	J89	3927982.138	J90	3928107.217	J91	3928232.296	J92	3928357.375	J93	3928478.454	J94	3928603.533	J95	3928728.612
J96	3928853.751	J97	3928978.830	J98	3929103.909	J99	3929228.988	J100	3929354.067	J101	3929479.146	J102	3929604.225	J103	3929729.304
J104	3929854.423	J105	3929979.502	J106	3930104.581	J107	3930229.660	J108	3930354.739	J109	3930479.818	J110	3930604.897	J111	3930729.976
J112	3930855.138	J113	3930980.217	J114	3931105.296	J115	3931230.375	J116	3931355.454	J117	3931480.533	J118	3931605.612	J119	3931730.691
J120	3931855.853	J121	3931980.932	J122	3932106.011	J123	3932231.090	J124	3932356.169	J125	3932481.248	J126	3932606.327	J127	3932731.406
J128	3932856.526	J129	3932981.605	J130	3933106.684	J131	3933231.763	J132	3933356.842	J133	3933481.921	J134	3933607.000	J135	3933732.079
J136	3933857.178	J137	3933982.257	J138	3934107.336	J139	3934232.415	J140	3934357.494	J141	3934482.573	J142	3934607.652	J143	3934732.731
J144	3934857.851	J145	3934982.930	J146	3935108.009	J147	3935233.088	J148	3935358.167	J149	3935483.246	J150	3935608.325	J151	3935733.404
J152	3935858.504	J153	3935983.583	J154	3936108.662	J155	3936233.741	J156	3936358.820	J157	3936483.899	J158	3936608.978	J159	3936734.057
J160	3936859.151	J161	3936984.230	J162	3937109.309	J163	3937234.388	J164	3937359.467	J165	3937484.546	J166	3937609.625	J167	3937734.704
J168	3937859.808	J169	3937984.887	J170	3938109.966	J171	3938235.045	J172	3938360.124	J173	3938485.203	J174	3938610.282	J175	3938735.361
J176	3938860.441	J177	3938985.520	J178	3939110.599	J179	3939235.678	J180	3939360.757	J181	3939485.836	J182	3939610.915	J183	3939735.994
J184	3939861.074	J185	3939986.153	J186	3940111.232	J187	3940236.311	J188	3940361.390	J189	3940486.469	J190	3940611.548	J191	3940736.627
J192	3940861.706	J193	3940986.785	J194	3941111.864	J195	3941236.943	J196	3941362.022	J197	3941487.101	J198	3941612.180	J199	3941737.259
J200	3941862.318	J201	3941987.397	J202	3942112.476	J203	3942237.555	J204	3942362.634	J205	3942487.713	J206	3942612.792	J207	3942737.871
J208	3942863.013	J209	3942988.092	J210	3943113.171	J211	3943238.250	J212	3943363.329	J213	3943488.408	J214	3943613.487	J215	3943738.566
J216	3943863.645	J217	3943988.724	J218	3944113.803	J219	3944238.882	J220	3944363.961	J221	3944489.040	J222	3944614.119	J223	3944739.198
J224	3944864.277	J225	3944989.356	J226	3945114.435	J227	3945239.514	J228	3945364.593	J229	3945489.672	J230	3945614.751	J231	3945739.830
J232	3945864.970	J233	3945989.049	J234	3946114.128	J235	3946239.207	J236	3946364.286	J237	3946489.365	J238	3946614.444	J239	3946739.523
J240	3946864.617	J241	3946989.696	J242	3947114.775	J243	3947239.854	J244	3947364.933	J245	3947489.012	J246	3947614.091	J247	3947739.170
J248	3947864.315	J249	3947989.394	J250	3948114.474	J251	3948239.553	J252	3948364.632	J253	3948489.711	J254	3948614.790	J255	3948739.869
J256	3948865.008	J257	3948989.087	J258	3949114.166	J259	3949239.245	J260	3949364.324	J261	3949489.403	J262	3949614.482	J263	3949739.561
J264	3949864.640	J265	3949989.719	J266	3950114.798	J267	3950239.877	J268	3950364.956	J269	3950489.035	J270	3950614.114	J271	3950739.193
J272	3950864.392	J273	3950989.471	J274	3951114.550	J275	3951239.629	J276	3951364.708	J277	3951489.787	J278	3951614.866	J279	3951739.945
J280	3951865.024	J281	3951989.103	J282	3952114.182	J283	3952239.261	J284	3952364.340	J285	3952489.419	J286	3952614.498	J287	3952739.577
J288	3952864.656	J289	3952989.735	J290	3953114.814	J291	3953239.893	J292	3953364.972	J293	3953489.051	J294	3953614.130	J295	3953739.209
J296	3953864.288	J297	3953989.367	J298	3954114.446	J299	3954239.525	J300	3954364.604	J301	3954489.683	J302	3954614.762	J303	3954739.841
J304	3954864.920	J305	3954989.000	J306	3955114.079	J307	3955239.158	J308	3955364.237	J309	3955489.316	J310	3955614.395	J311	3955739.474
J312	3955864.556	J313	3955989.635	J314	3956114.714	J315	3956239.793	J316	3956364.872	J317	3956489.951	J318	3956615.030	J319	3956739.109
J320	3956865.188	J321	3956989.267	J322	3957114.346	J323	3957239.425	J324	3957364.504	J325	3957489.583	J326	3957614.662	J327	3957739.741
J328	3957864.804	J329	3957989.883	J330	3958114.962	J331	3958239.041	J332	3958364.120	J333	3958489.199	J334	3958614.278	J335	3958739.357
J336	3958864.436	J337	3958989.515	J338	3959114.594	J339	3959239.673	J340	3959364.752	J341	3959489.831	J342	3959614.910	J343	3959739.989
J344	3959865.068	J345	3959989.147	J346	3960114.226	J347	3960239.305	J348	3960364.384	J349	3960489.463	J350	3960614.542	J351	3960739.621
J352	3960864.702	J353	3960989.781	J354	3961114.860	J355	3961239.939	J356	3961365.018	J357	3961489.097	J358	3961614.176	J359	3961739.255
J360	3961864.399	J361	3961989.478	J362	3962114.557	J363	3962239.636	J364	3962364.715	J365	3962489.794	J366	3962614.873	J367	3962739.952
J368	3962865.092	J369	3962989.171	J370	3963114.251	J371	3963239.330	J372	3963364.409	J373	3963489.488	J374	3963614.567	J375	3963739.646
J376	3963864.740	J377	3963989.819	J378	3964114.898	J379	3964239.977	J380	3964365.056	J381	3964489.135	J382	3964614.214	J383	3964739.293
J384	3964864.373	J385	3964989.452	J386	3965114.531	J387	3965239.610	J388	3965364.689	J389	3965489.768	J390	3965614.847	J391	3965739.926
J392	3965865.005	J393	3965989.084	J394	3966114.164	J395	3966239.243	J396	3966364.322	J397	3966489.401	J398	3966614.480	J399	3966739.559
J400	3966864.658	J401	3966989.737	J402	3967114.816	J403	3967239.895	J404	3967364.974	J405	3967489.053	J406	3967614.132	J407	3967739.211
J408	3967864.355	J409	3967989.434	J410	3968114.513	J411	3968239.592	J412	3968364.671	J413	3968489.750	J414	3968614.829	J415	3968739.908
J416	3968865.047	J417	3968989.126	J418	3969114.205	J419	3969239.284	J420	3969364.363	J421	3969489.442	J422	3969614.521	J423	3969739.600
J424	3969864.679	J425	3969989.758	J426	3970114.837	J427	3970239.916	J428	3970364.995	J429	3970489.074	J430	3970614.153	J431	3970739.232
J432	3970864.391	J433	3970989.470	J434	3971114.549	J435	3971239.628	J436	3971364.707	J437	3971489.786	J438	3971614.865	J439	3971739.944
J440	3971865.084	J441	3971989.163	J442	3972114.242	J443	3972239.321	J444	3972364.400	J445	3972489.479	J446	3972614.558	J447	3972739.637
J448	3972864.771	J449	3972989.850	J450	3973114.929	J451	3973239.008	J45							